

AVL SERIES: Top entry mixer with parallel shaft gearbox

Parallel shaft gearbox, selected with high safety factor, has rigid cast iron casing and reinforced bearings, able to keep both torque for allow rotation and bending reaction from rotating impellers, without the help of additional bearing stool.

Motor is in vertical position, so it is preferred configuration when building roof is far from top of tank.

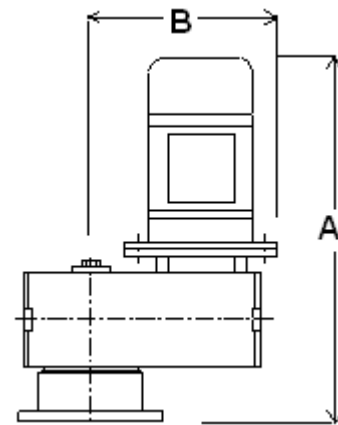
Mixer shaft is directly connected to gearbox hollow shaft and fixed with top screw and key.

For this reason there is no need for rigid coupling on shaft.

AVL		RANGE											
		Kw											
		1,1	1,5	2,2	3	4	5,5	7,5	9,2	11	15	18,5	22
RPM	140												
	110												
	90												
	70												
	58												
	46												
	38												
	30												
AVL1		AVL2		AVL3/4		AVL5		AVL6		AVL7			

Note: Higher speed permitted

DIMENSIONS & LOADS ON SUPPORT							
Model	Flange	A	B	∅ shaft	Torque (Nm)	Bend (Nm)	Thrust (N)
AVL1	IEC80	575	245	40	200	450	1500
AVL1-L	DN150	580					
AVL1-S	DN150	700					
AVL2	IEC100	660	275	50	450	650	2800
AVL2-L	DN200	680					
AVL2-S	DN150	850					
AVL3	IEC132	770	335	60	900	1200	4500
AVL3-L	DN250	790					
AVL3-S	DN250	950					
AVL4	IEC160	740	380	70	1000	1500	4500
AVL4-L	DN350	760					
AVL4-S	DN300	960					
AVL5	IEC160	740	460	80	1900	2400	6500
AVL5-L	IEC160	760					
AVL5-S	DN350	960					
AVL6-L	DN400	1060	480	90	3400	3900	8000
AVL6-S	DN350	1260					
AVL7-L	DN350	1160	490	100	5000	6000	12000
AVL7-S	DN350	1360					

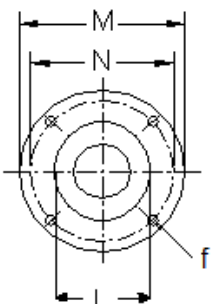


Version –L has additional PN10 flange with radial lip seal included.

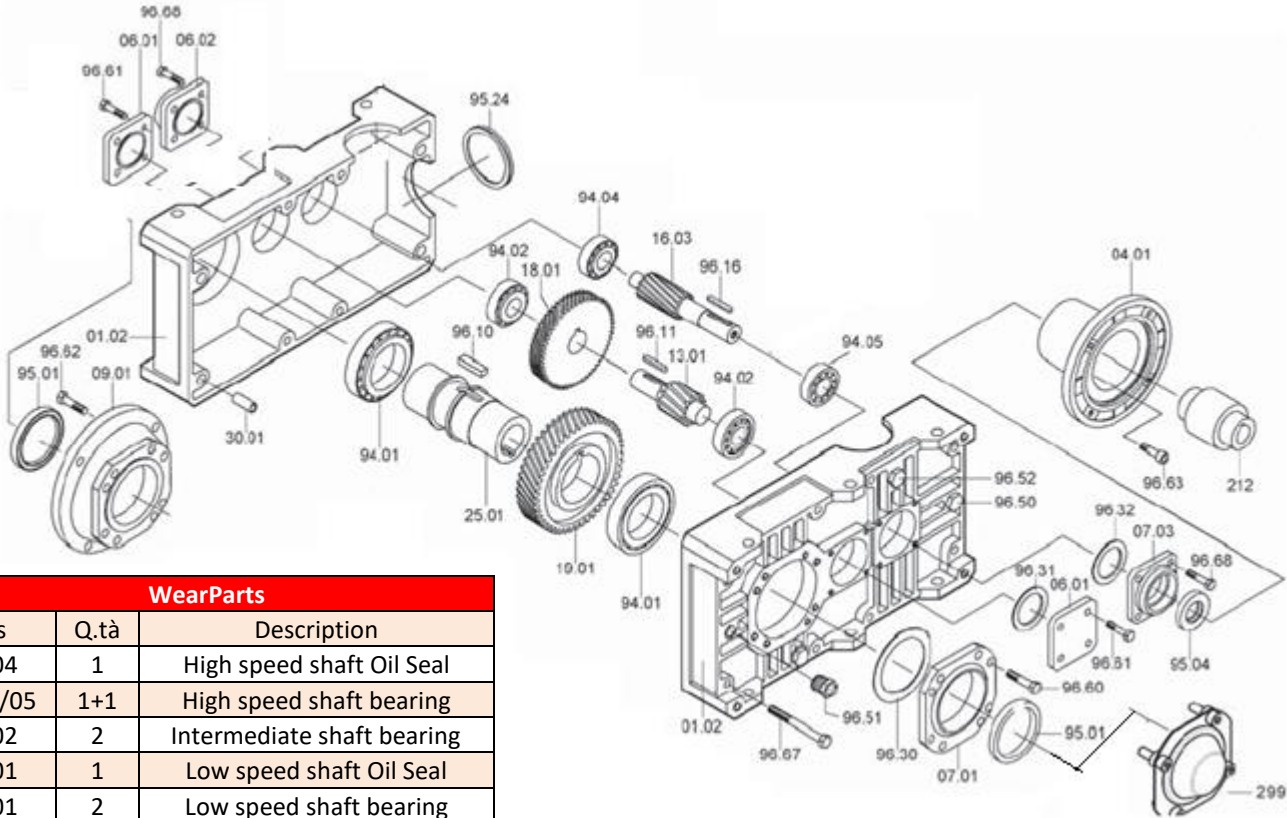
This seal guarantee that all wetted parts are of process material, avoid smokes outlet or possible gearbox oil leakage drop into the tank.

Version –S has additional stool ending with PN10 flange. This also mount cartridge mechanical seal which keep pressure or vacuum required for process reasons inside tank.

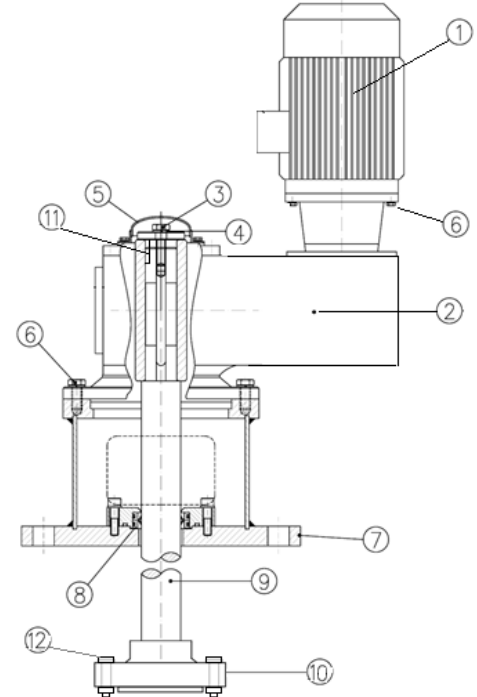
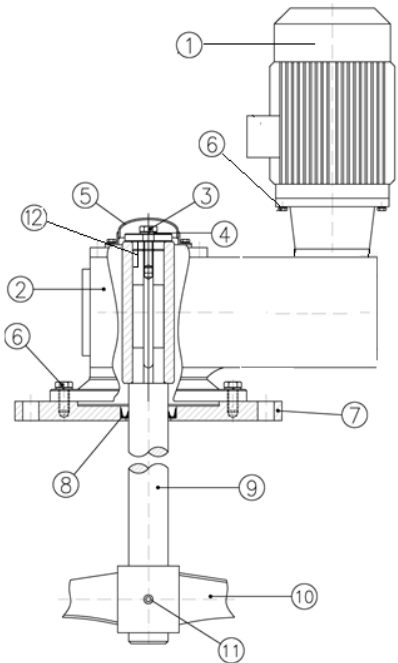
This version also include a flanged coupling on shaft which allow to ship drive unit with mechanical seal mounted even if shaft is dismantled.



	Gearbox Flange				Added PN10 Flange					
	IEC80	IEC100	IEC132	IEC160	DN150	DN200	DN250	DN300	DN350	DN400
M	200	250	300	350	285	340	395	445	505	565
N	165	215	265	300	240	295	350	400	460	515
L	130	180	230	250						
f	4 x 11	4 x 14	4 x 14	4 x 18	8 x 22	8 x 22	12 x 22	12 x 22	16 x 22	16 x 26



WearParts		
Pos	Q.tà	Description
95.04	1	High speed shaft Oil Seal
94.04/05	1+1	High speed shaft bearing
94.02	2	Intermediate shaft bearing
95.01	1	Low speed shaft Oil Seal
94.01	2	Low speed shaft bearing
	1	Lip Seal -L



AVL-L			
Pos	Description	Pos	Description
1	Electric Motor	7	Connecting Flange
2	Gearbox	8	Lip seal
3	Fixing screw	9	Shaft
4	Washer	10	Impeller
5	Protection	11	Impeller fastener
6	Fixing screw	12	Key

AVL-S			
Pos	Description	Pos	Description
1	Electric Motor	7	Connecting Flange
2	Gearbox	8	Cartridge seal
3	Fixing screw	9	Shaft
4	Washer	10	Shaft flanged coupling
5	Protection	11	Key
6	Stool	12	Fixing screw