

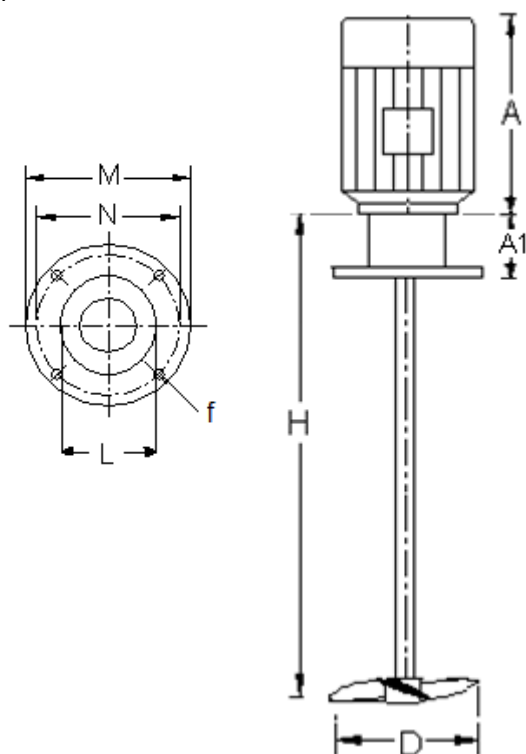
AV Series: Top Entry High Speed Mixers

High speed top entry mixers, AV series, are best solution for blending in small vessels.

They're also used for dissolutions or dispersions of solids within a liquid volume.

For blending or dissolutions are widely used marine propellers (M), while for dispersions are recommended saw tooth (cowles) turbines (S).

For the same liquid volume, adding a liquid, dissolving or dispersing a powder, are requiring completely different power levels.



The main item of the drive unit is the electric motor, with its raised face connecting flange, but several components may be added:

- Aluminium flat flange (AVOf series) for replacing the raised face ones
- Cast aluminium Stool with additional bearing when required longer shafts (AV1 / AV2 / AV3 / AV4 series)
- Stainless Steel flange with seal system, which may be a radial lip seal (-L version) or a dry run mechanical seal (-S version).

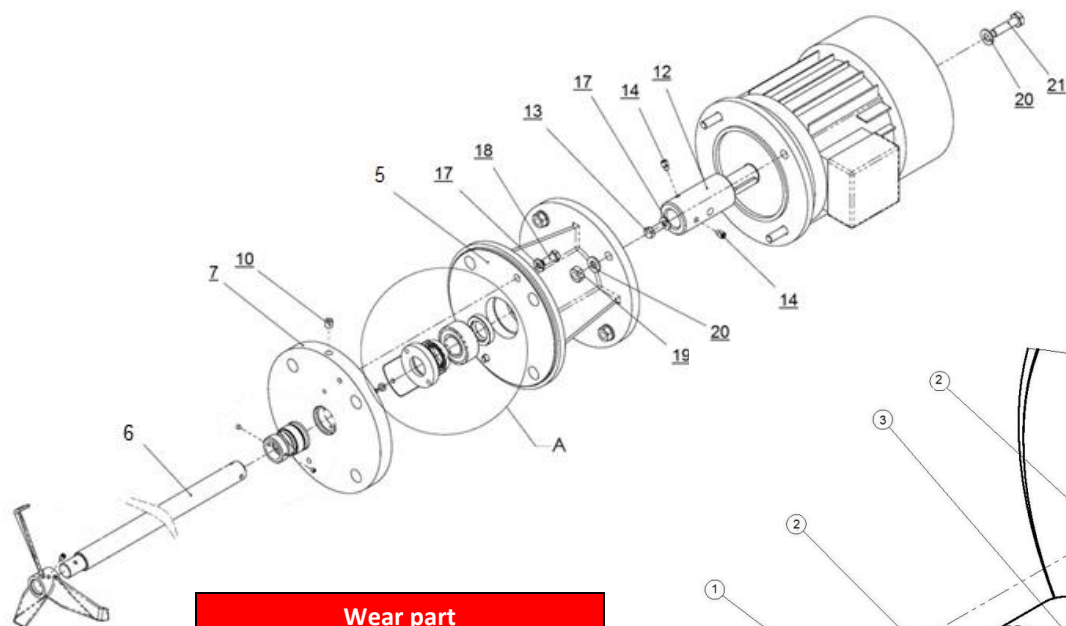
When using dry run seal it is forbidden to exceed speed as per below table

Seal Ø	20	25	30	35	40	50
Max RPM	1450	1450	950	950	750	750

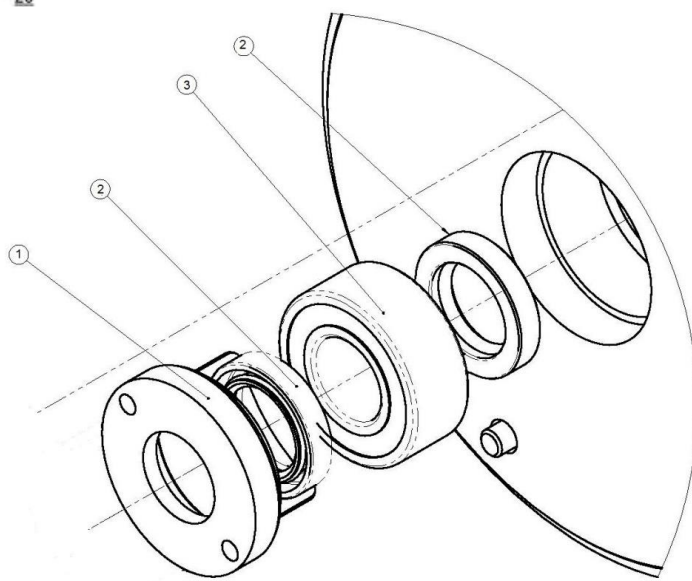
Mixer shaft is fixed to male motor shaft, directly when female connection is obtained on the shaft, or by a rigid coupling.

DIMENSIONS

Model	Flange			Altezza A	Extra A1			Motor Power		
	Base	-L version	-S version		-f	-L	-S	4p	6p	8p
AV0-80	IEC80	DN80/DN150	DN100	240	55	75	140	0,75	0,37	0,18
AV0-90	IEC90	DN80/DN150	DN100	280	55	126	140	1,1	0,75	0,55
AV0-100	IEC100	DN100/DN200	DN150	320	55	106	180	-	1,5	1,1
AV0-132	IEC132	DN150/DN250	-	420	106	126	-	5,5	4	2,2
AV0-160	IEC160	DN300/DN350	-	540	-	20	-	15	11	5,5
AV1	IEC80/90	DN80/DN150	DN100	390	-	20	140	1,5	1,1	0,55
AV2	IEC100	DN100/DN200	DN150	620	-	20	180	4	1,5	1,1
AV3	IEC132	DN150/DN250	-	770	-	20	-	5,5	4	2,2
AV4	IEC160	DN150/DN250	-	890	-	20	-	15	11	5,5



Wear part		
Pos	Q.ty	Description
1	1	Ring Nut
2	2	Radial seal
3	1	Bearing



Pos	Description
1	Electric Motor
2	Stool
3	Fixing screw
4	Rigid Coupling
5	Impeller fastener
6	Shaft
7	Impeller

